



wa.rogaine.asn.au

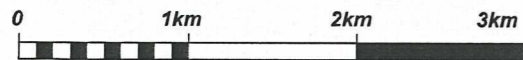
Not the Hair Restorer Rogaine - WARA Spring 12 Hour

2003 Paddy Pallin Schools Championships

11 October 2003.

LEGEND

SCALE 1:50,000, 5 metre contour interval



- Building
- Continuations
- Control
- Contours
- Dam
- Forest Boundary
- Hash House
- Magnetic North Line
- Out of Bounds
- Road, Sealed
- Road, Major Gravel
- Track
- Watercourse
- Water Drop
- Marsh
- Pipeline

Note: 1) Not all dams marked
 2) Tracks are approximate
 3) Out of bounds for crops are approximate

SETTERS VETTERS

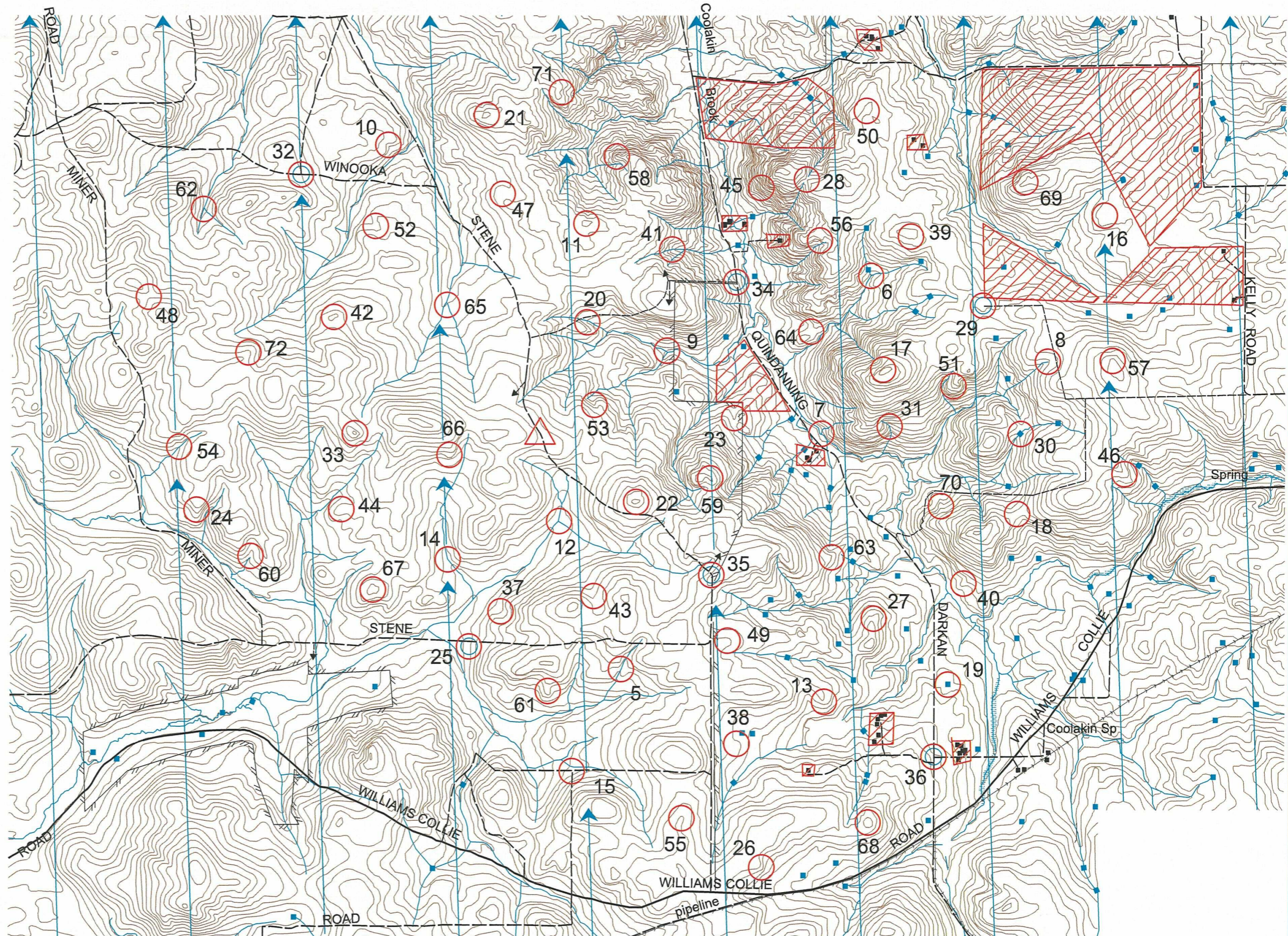
Patrick Tremlett Paul Setchell
 Denis Sawers Peter Wilshaw
 Greg Kirk

THANKS TO THE FARMERS

Max and Margaret Cowcher
 Lance and Debbie Kemp (Lynford Farm)
 Phil Morgan and Carmel Davies
 Jim Stockton





This map was produced using OCAD. Data supplied by DOLA and used under copy licence 393/93. Possession of this map does not give right of entry to this area.





Not the Hair Restorer Rogaine - WARA Spring 12 Hour



	Control	Points	Description
	5	20	The gully
	6	20	The creek junction
	7	20	The Watercourse junction - E side
	8	20	The gully
	9	20	The creek junction S side
Astronomical Data	10	20	The gully
Sunrise 0542	11	20	The knoll
Sunset 1825	12	20	The creek near creek junction
Moonrise 1919			
Moonset 0611	13	30	The spur
	14	30	The watercourse
	15	30	The T junction 80m at 139 deg
Control Statistics	16	30	A knoll (Farm views)
68 Controls	17	30	The knoll - NW edge
3,700 Total Points	18	30	The saddle
6 Water Drops	19	30	The dam E side
	20	30	The watercourse
	21	30	The knoll
Patrolled Road Circuits	22	30	The knoll
Stene -	23	30	The gully
Winooka -	24	30	The spur
Miner -			
Stene	25	40	A gravel pit - <i>Water drop</i>
	26	40	The spur
Stene -	27	40	The spur
Willaims-Collie	28	40	The saddle
Quindanning-Darken -	29	40	On a fence by the track - <i>Water drop</i>
Richards -	30	40	The dam - SW 80 metre
Kelly -	31	40	The gully - (watch out for deep ruts)
Farm lane -	32	40	The track junction - <i>Water drop</i>
Quindanning-Darken -	33	40	The knoll
Willaims-Collie -	34	40	The track road junction - <i>Water drop</i>
Stene	35	40	The track fence junction - <i>Water drop</i>
	36	40	The road junction - <i>Water drop</i>
			
	37	50	The gully
	38	50	A knoll (Valley views)
	39	50	The knoll SE end on fence

Control	Points	Description
40	50	The rocky spur
41	50	The watercourse
42	50	The knoll
43	60	The gully
44	60	A knoll
45	60	The spur - Head of granite boulders
46	60	The spur
47	60	The spur
48	60	The saddle
49	70	A knoll
50	70	A knoll
51	70	The rocky spur
52	70	The gully
53	70	The gully
54	70	The gully
55	80	The spur
56	80	Foot of 10 metre rock slope
57	80	The knoll - NW side
58	80	A knoll on a spur
59	80	The spur
60	80	The gully
61	90	The spur
62	90	The creek junction
63	90	The spur
64	90	The saddle - on granite rocks
65	90	The creek - near creek junction
66	90	The spur
67	100	The knoll
68	100	The knoll
69	100	The spur (Wide views)
70	100	A rocky knoll
71	100	Foot of 2 metre rock face
72	100	The spur